

# Smart Temperature & Humidity Detector User Manual

M420-109Ever1.0



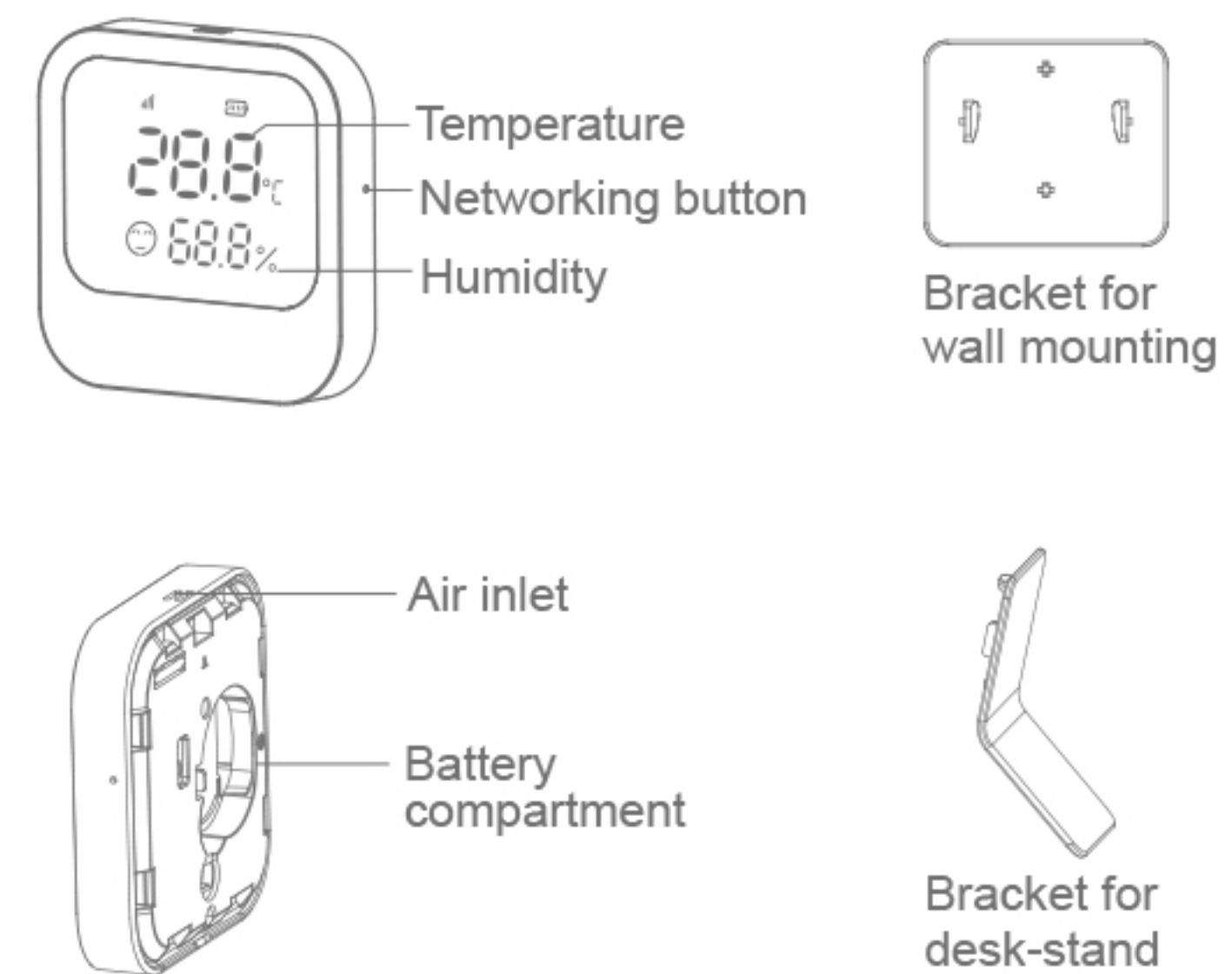
\*Please read the user manual carefully before operation. The guide picture is for reference only, please in kind prevail.

## 01/Product Introduction

This smart temperature and humidity detector adopts high precision temperature and humidity sensor, with quality MCU to process detected temperature and humidity conditions and extra-low power consumption Zigbee wireless communication technology to help send temperature and humidity information to user APP in real time. This product is suitable for environmental monitoring in residential building, office building, computer room, shopping mall, hotel, teaching building, bank, library,warehouse and etc.

01

## 02/Illustrations



02

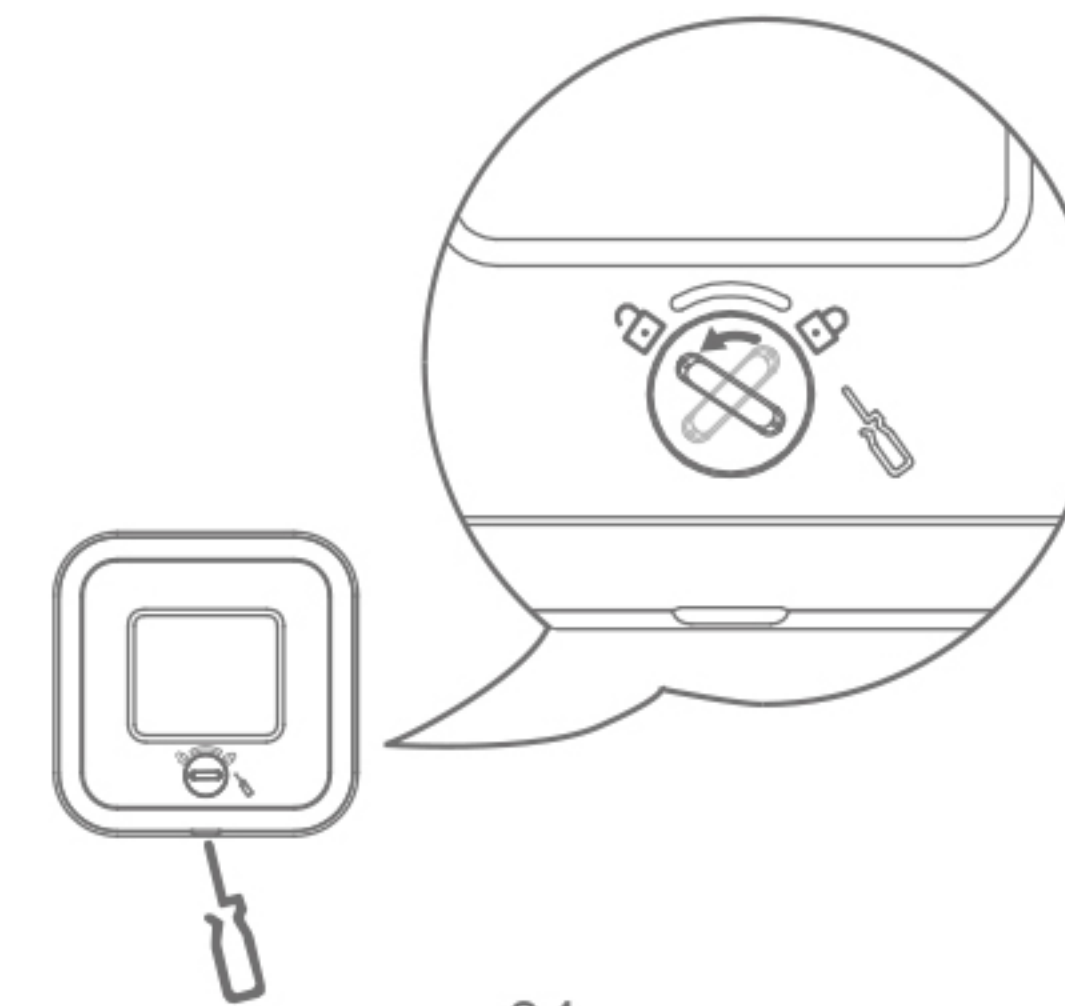
## 03/Technical Parameters

1. Working Voltage: DC3V (1×CR2450 battery)
2. Networking: Zigbee 3.0
3. Wireless Network Distance: ≤100m ( open area indoor )
4. Working Temperature: -10°C ~ +55°C
5. Working Humidity: ≤95%RH(no condensation)
6. Dimension: 60×60×14 mm

03

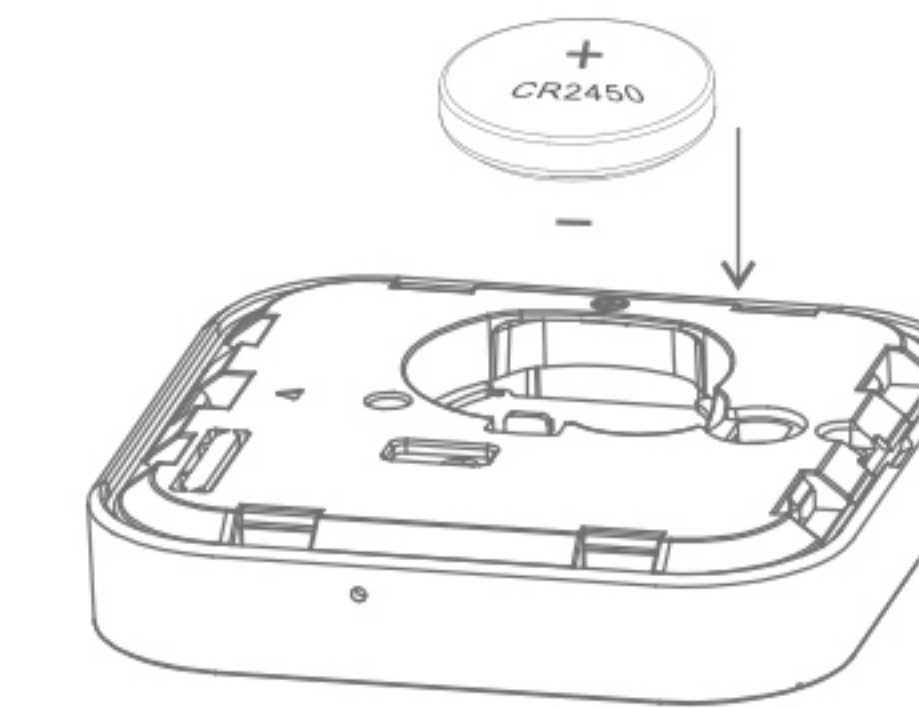
## 04/Battery installation and replacement

1. Rotate the key hole with a screw driver from “ 🔒 ” direction to “ 🔓 ” .
2. Open the bottom cover with the screw driver.



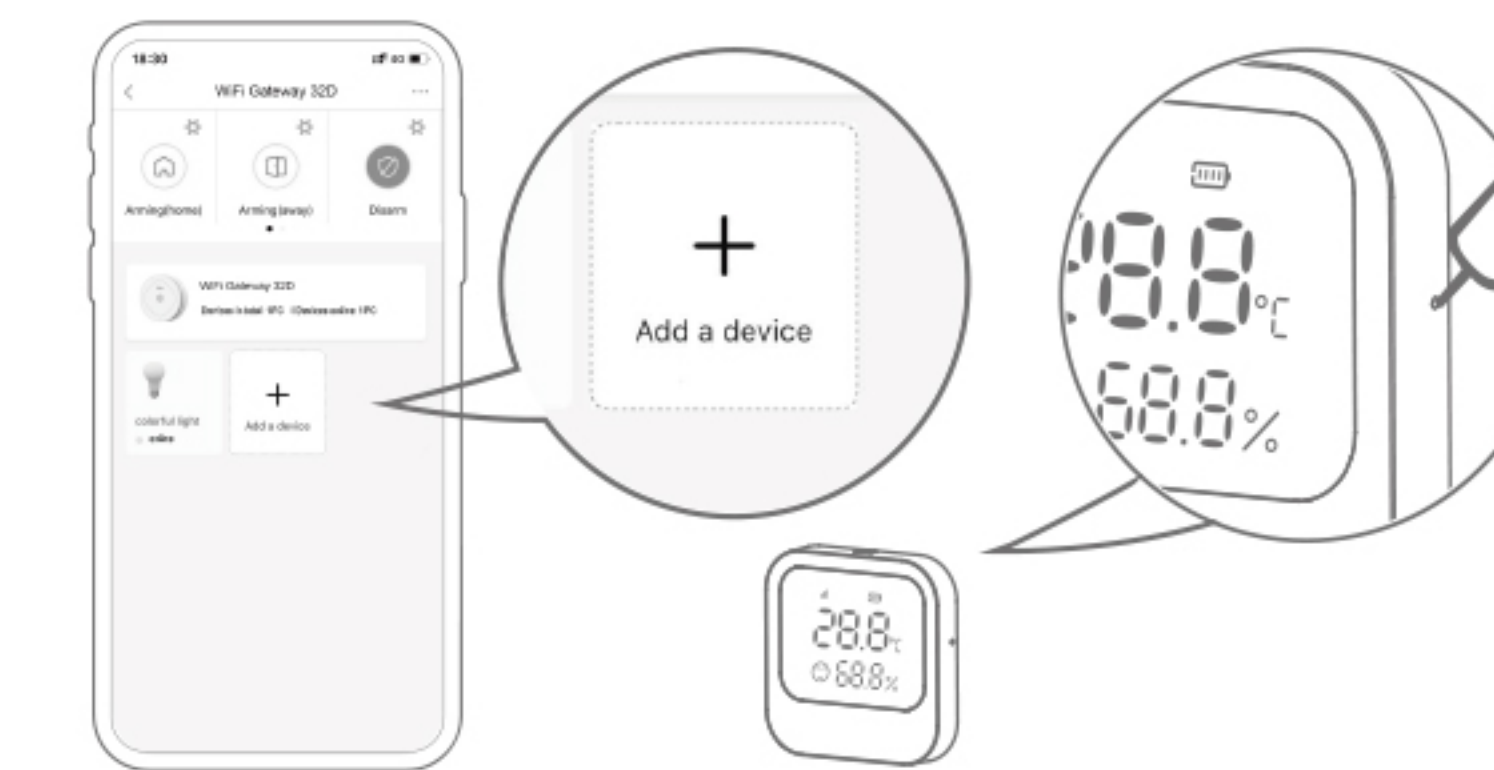
04

- 3.Place a new battery according to correct negative and positive electrode into the battery compartment. Dispose of used battery correctly for environment protection.
- 4.Place the bottom cover back to the device and rotate the key hole back with the screw driver.



05

## 05/Add device to network



Open APP and enter into gateway, then tap"+" to add temperature & humidity detector according to the instructions.

06

According to APP prompt, long press the networking button for 5 seconds, the device will enter network inclusion status and network icon “ 📶 ” will flash quickly (5 times/second) . Once network inclusion is done, network icon “ 📶 ” will keep on. The network inclusion process will stop if it fails to add to the network within 60 seconds. The network icon “ 📶 ” will flash slowly for 6 times about 3 seconds (twice/second) and then go off, and APP prompt network inclusion fails.

Note:Press the networking button again during network inclusion status, networking process will be stopped, the network icon “ 📶 ” will flash slowly for 6 times about 3 seconds (twice/second).

07

## ! Tips

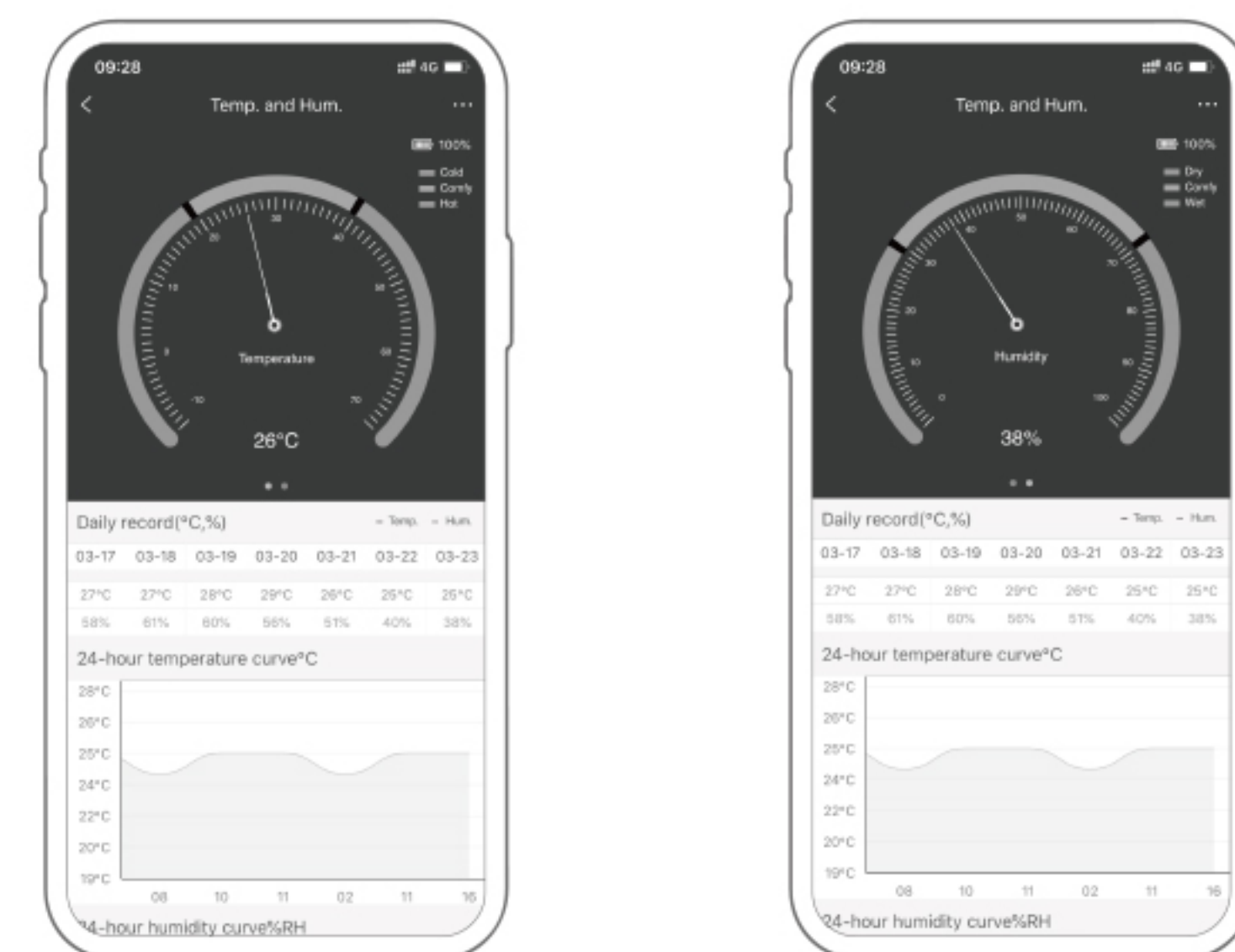
Due to the APP upgrade and update, this guideline may be slightly different from the actual operation, please follow the instructions in the APP.

\* If networking failed, please move the device closer to the gateway and try again.

\* Please add the device to the gateway first, and then install and fix it.

08

## 06/Display effect in user APP



09

## 07/visual indication instructions

### 1.Network icon

	Status
Network icon “ 📶 ”	1.Flashes during network inclusion process 2.Keeps on if network inclusion is completed. 3.Flashes slowly for 6 times about 3 seconds (twice/second) if network inclusion fails.
	Flashes slowly for 6 times about 3 seconds (twice/second) after long pressing networking button, indicating the device has quit the network.

### 2.Battery power icon



### 3.Facial expression icon

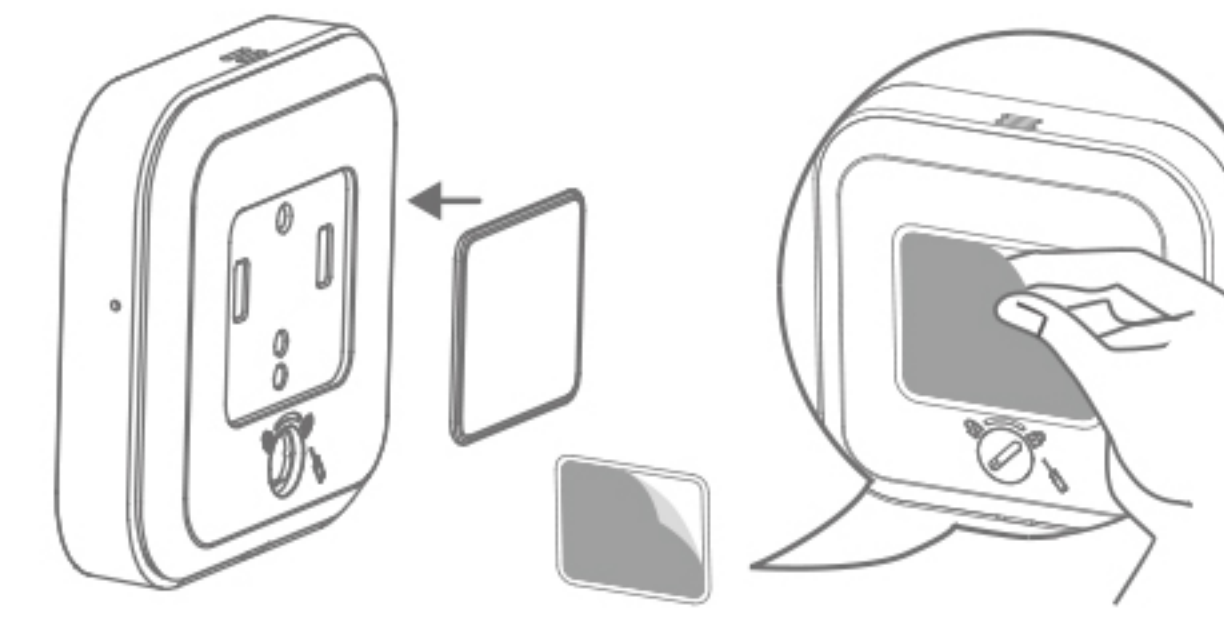


10

## 08/Installation

### Wall mounting

- 1.Insert the bracket (for wall mounting) into the device bottom cover.
- 2.Tear off adhesive film, adhere the device to the required position.



11

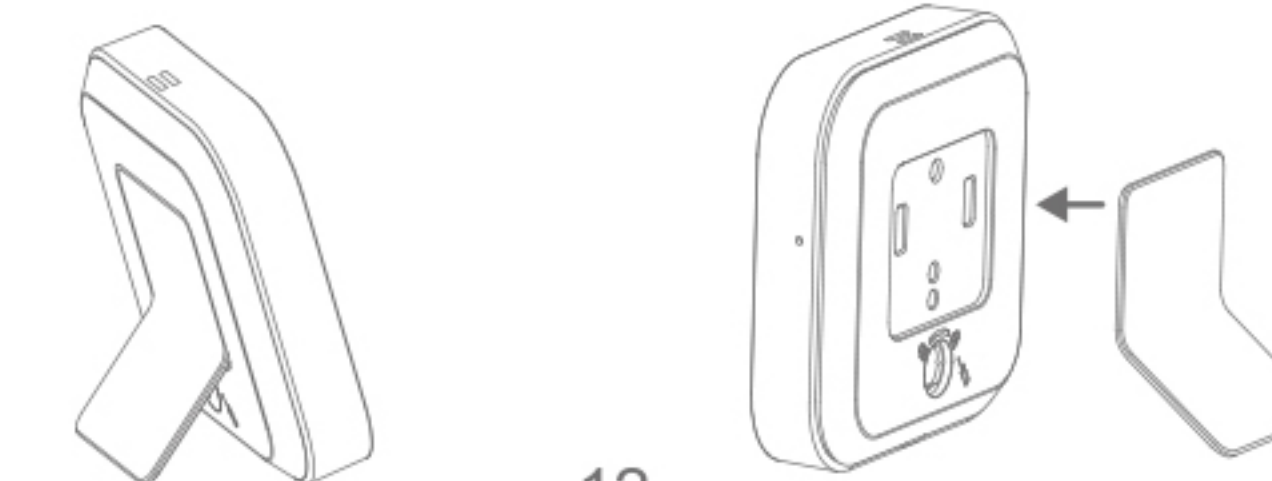


Installation with double-sided adhesive should pay attention to as follows:

- 1.Make sure the installation surface is smooth. Flat, stable, dry and clean.
- 2.After installation, regularly check whether the product is attached firmly to the installation surface.

### Desk-stand

- 1.Insert the bracket (for desktop placement) into the device bottom cover.
- 2.Place the monitor on a flat and dust-free surface.



12

## 09/Statement

- 1.The information in the user manual is for reference only and does not constitute any form of commitment.
- 2.Without the written permission of the manufacturer, any individual or organization shall not extract or copy part or all of the contents of this user manual, and shall not spread it in any form.
- 3.As the technology is constantly updated, the manufacturer reserves the right to modify the user manual without prior notice. If the user manual and the actual operations is inconsistent, the final interpretation is reserved to the manufacturer herein.

13