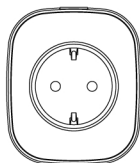


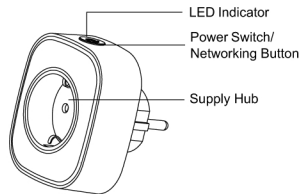
Smart Metering Plug Quick Operation Guide

M416-2EVer1.1



*Please read the user manual carefully before operation.
The guide picture is for reference only, please in kind prevail.

Product Details



1

This is a smart metering plug, adopts flame retardant housing shell, and super low power consumption ZigBee wireless transmission technology. It can be used as ZigBee wireless repeater, to extend wireless communication distance. It supports power metering and timing switch functions. With the function of power, voltage, current overload protection. Plug and play, easy to install.

Product Description

Technical Parameters

1. Working Voltage: AC100V~240V (full voltage range)
2. Average Power Consumption: <0.5W
3. Maximum Load: 3000W
4. Metering Voltage Range: 100VAC-240VAC
5. Metering Current Range: <16A
6. Metering Power Range: <3000W
7. Networking : ZigBee Ad-Hoc Networking
8. Wireless Networking Distance: Up to 100 meters (in open area)
9. Working Environment: -10°C ~ +50°C
10. Working Humidity: ≤ 95%RH
11. Dimensions: 79.6*67.9*72mm

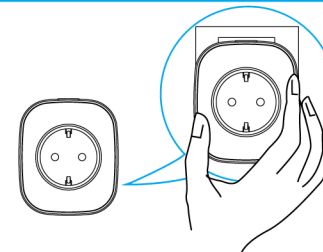
2

3



- Click add icon in the app to enter into networking mode.

4

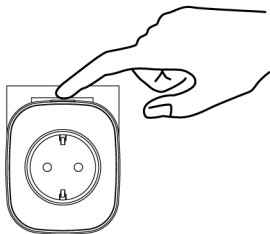


- Plug the Smart Metering Plug into the plug to enter into Ad-Hoc networking state (networking state will be finished a minute later), the interface will prompt "networking successfully".

5

Networking 1 :
Ad-Hoc networking

Networking 2 :
Manual networking



- Press and release the power switch (networking button) to enter into networking state, LED Indicator flash for 3 seconds (5 times per second) if networking successfully, then APP will prompt "networking successfully".

6

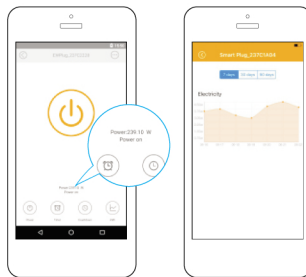
Delete sub device

1. Enter into the device list of APP, then long press the device needed to delete, APP interface will prompt "delete device", click to delete device.
2. Long press power switch (networking button) for 5 seconds to disconnect network. LED Indicator flash slowly for 3 seconds (2 times per second), which indicates network disconnecting successfully.

Description of LED Indicator Status

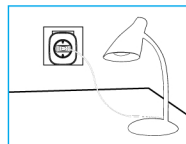
Light	State
Green LED	Flash for 3 seconds if networking successfully (5 times / second).
	1. Flash slowly for 3 seconds (2 times per second) if network disconnecting successfully. 2. Long press power switch (networking button) for 5 seconds, green LED flash slowly for 3 seconds (2 times per second) if network disconnecting successfully.
	Light on: Plug turned on Light off: Plug turned off

7



- The APP interface will show the power of the appliance and record the power consumption after appliance is plugged into the smart plug.

8



It is suitable for table lamp, TV, air-conditioner, refrigerator, electric fan, coffee machine, bread machine and some other household appliances to meter power consumption.

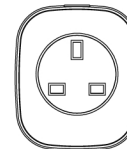
Power on/off: After pressing power switch/networking button, blue LED keeps on and supply hub will be powered on; Press power switch/networking button again, blue LED turned off, supply hub will be powered off.

9

Chooseable Plugs



US Standard Smart Plug



UK Standard Smart Plug

- ! Please choose proper plug type according to your need.

10

Environmentally friendly disposal

Old electrical appliances must not be disposed of together with the residual waste, but have to be disposed of separately. The disposal at the communal collecting point via private persons is for free. The owner of old appliances responsible to bring the appliances to these collecting points or to similar collection points. With this little personal effort, you contribute to recycle valuable raw materials and the treatment of toxic substances.

Statement

*Instruction is for reference only, please prevail in kind.
*Because of the updating of the technology, the final interpretation right owned by factory, if there are any inconformities when using this products under this instruction.

11