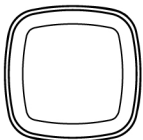


# Smart Motion Sensor User Manual

M414-2Ever1.0



\*Please read the user manual carefully before operation.  
The guide picture is for reference only, please in kind prevail.

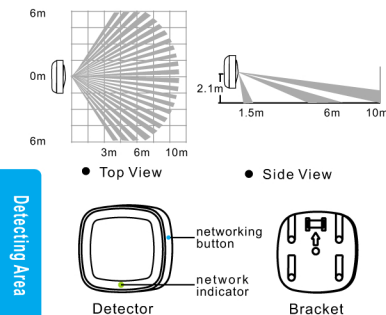
This product is Smart Motion Sensor, adopts extra low power consumption ZigBee wireless network and automatic threshold adjustment technology to enhance the stability of the detector, efficiently anti-false alarm. Automatic temperature compensation technology, can efficiently prevent detectors from the decrease in sensitivity resulted from the temperature variation. Suitable to be used for safety protection of residential, villas, factories, shopping malls, warehouses, office buildings, banks, computer room and other places.

## Product Introduction



1. Power Voltage: DC3V (1x CR 2450 Button Battery)
2. Standby Current:  $\leq 16\mu A$
3. Alarm Current:  $\leq 30mA$
4. Detecting Angle: 110 degrees
5. Installation Height: 2.1 m
6. Detecting iDstance: 9-12 m
7. Working Temperature:  $-10^{\circ}C \sim +50^{\circ}C$
8. Environment Humidity:  $\leq 95\%RH$  (no congelation)
9. Networking Mode: ZigBee Ad-Hoc Networking
10. Networking Distance:  $\leq 100$  m (open area)
11. Anti-RF Interference: 10MHz-1GHz 20V/m
12. Dimension: 65x65x28mm

## Specification



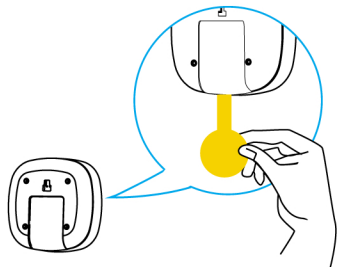
## Detecting Area



- Please avoid installation in outdoor, places with pets, air-condition, heat source nearby, places with direct sunshine and places under rotating objects.
- The installation surface should be solid without vibration.
- Please install the detector in places where an intruder may passes easily.



## TIPS



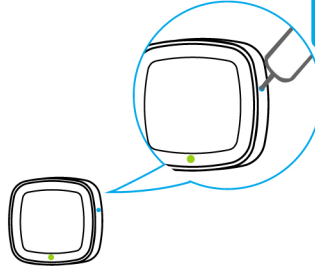
- Removing insulator make device on power. Device will in warm-up state when red LED flashes, after 30 seconds LED off, warm-up complete.

1



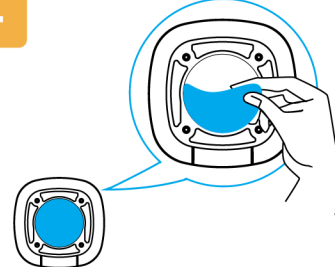
- Detector will enter the network mode by clicking adding devices in the APP.

2

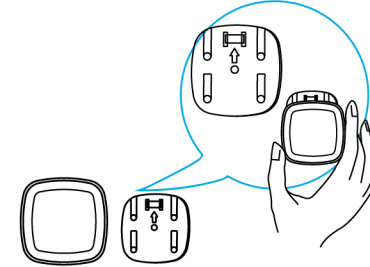


- According to APP prompt, press the button for 2 seconds after the networking equipment, green flash, APPInterface prompted, networking success. (press the networking button for 5 seconds to disconnect the network, after the green light flashes slowly for 3 seconds, which indicates network is disconnected successfully.)

3 4



- Paste device in the area required after removing double-side tap on the back side.



- Note: Please keep arrow part in the picture upwards. Put the detector into the bracket.

5