

# Photoelectric Smoke Alarm User Manual

M419-9Ever1.2



1008-CPR-MC  
69265714

Standards tested to: EN14604:2005/AC:2008

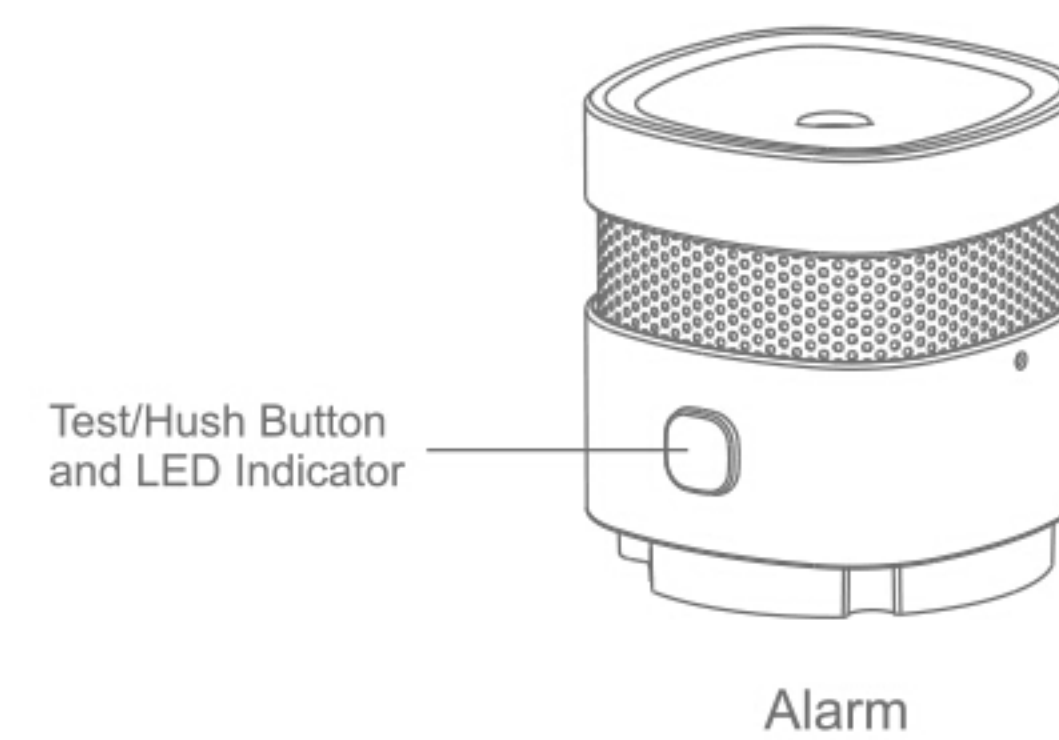
\*Please read the user's manual carefully before operation.  
The illustrations in the manual are only for your reference, please in kind prevail.

## 01/Product Introduction

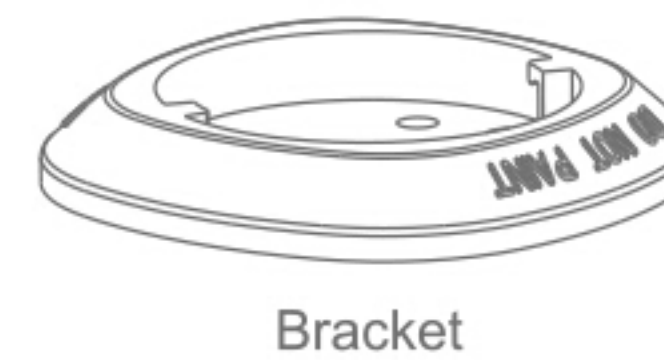
This product is a photoelectric smoke alarm, it is a smoke warning device. Photoelectric smoke alarms are more effective at detecting slow, smoldering fires that smolder for hours before bursting into flame. Such as cigarettes burning in couches or bedding. Please note, It can not detect gas, heat or flame. It can not prevent or put out fire. Once detect smoke, red led will flash rapidly and horn will sound alarm. Smoke alarms should be installed in all necessary places, such as living rooms, warehouses, basements, attics etc.

1

## 02/Product Details



Alarm



Bracket

2

3

## 03/Technical Data

- Working Voltage:DC3V(CR17335 / CR123A Lithium Battery)
- Sound Level:≥85dB/3m
- Working Temperature:-10°C ~ +50°C
- Working Humidity:≤95%RH (no condensation)
- Dimension:60\*60\*49.2mm

## 04/Tips

- This alarm is designed specifically for home use, may not be able to provide sufficient fire alert for public areas.
- Please do not install it in bathrooms and other humid places, dusty places, greasy places. Do not install in airy places where there is air conditioner or fan etc.
- Please keep alarm clean, do not let dust and greasy dirt accumulate on it. It is suggested to clean it every 6 months with household cleaner and soft brush.
- The lifetime of the alarm is 10 years, Please replace this alarm 10 years later even if it can work.
- If an alarm occurs, please pay attention to it. Besides correct use of smoke alarm. We should also strengthen the awareness of fire safety.

4

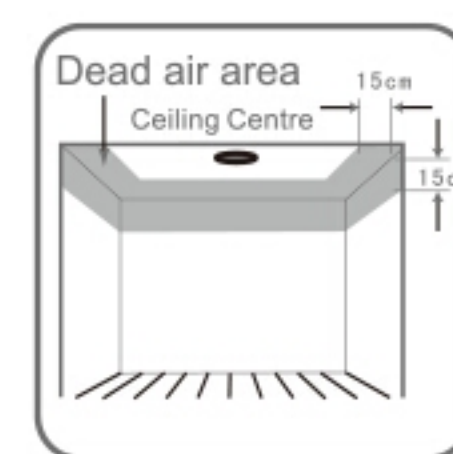
## 05/Installation Renderings

### Flat ceiling mounting

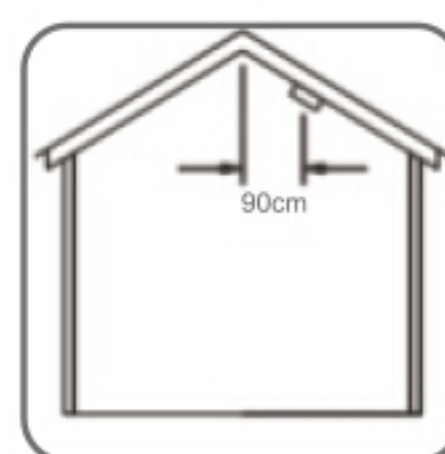
We know smoke rises up to ceiling, then will lateral spread, so the best location of an alarm is usually the center of ceiling. Do not install smoke detector in the dead air area (as shown in the below figure), besides keep at least 30cm distance from lights or other decorations. If hall is longer than 12 meters, please install at least 2 smoke alarms.

### Sloping ceiling mounting

Dead air at the peak of sloped ceiling may prevent the smoke from reaching the alarm in time to provide an early warning. So install smoke alarms on the ceiling where 0.9m(3 feet) from the highest point of a ceiling.



Recommended and Avoided Installation Position

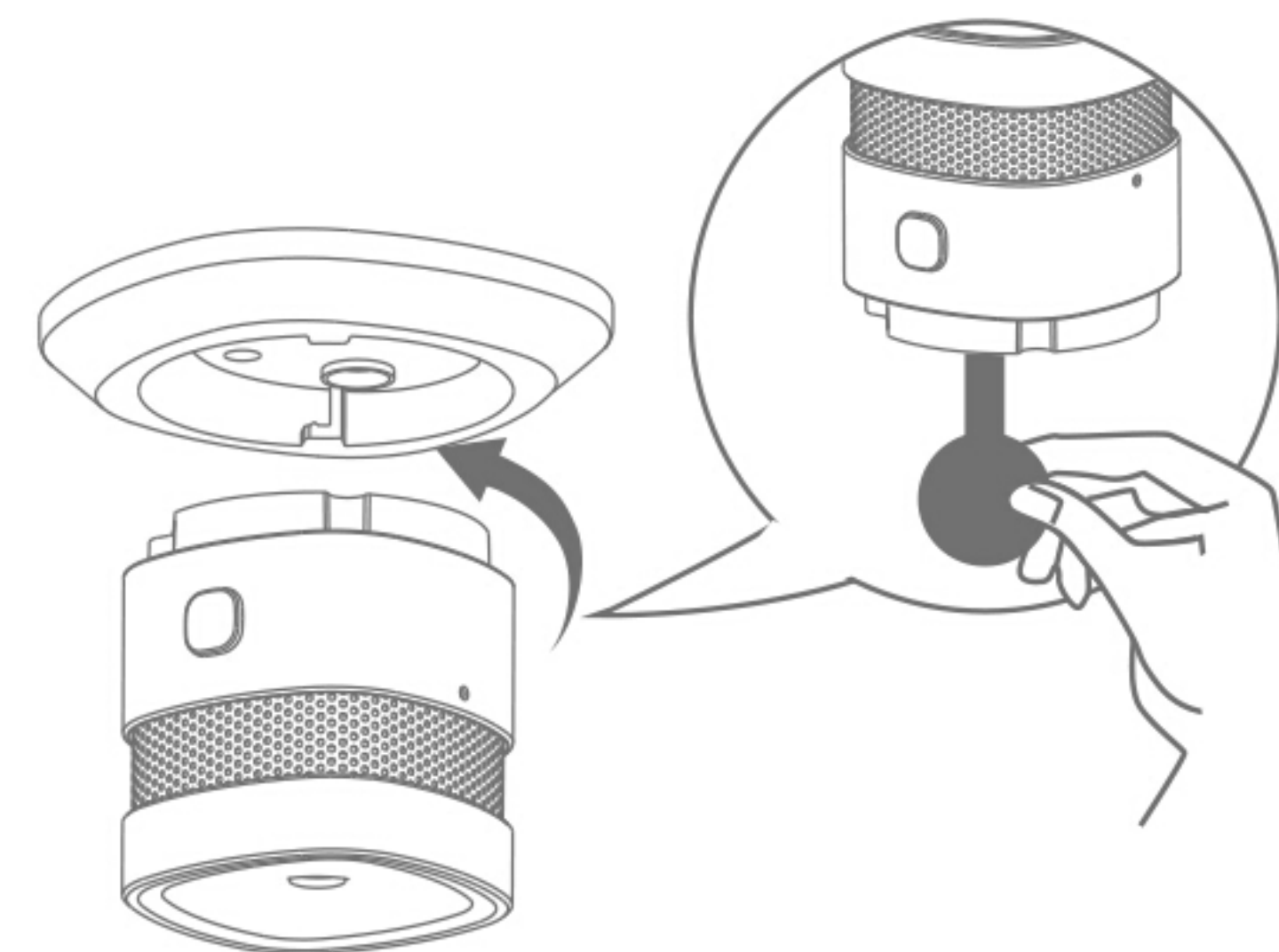


Sloping Ceiling Mounting Position

5

### Installation Step 1

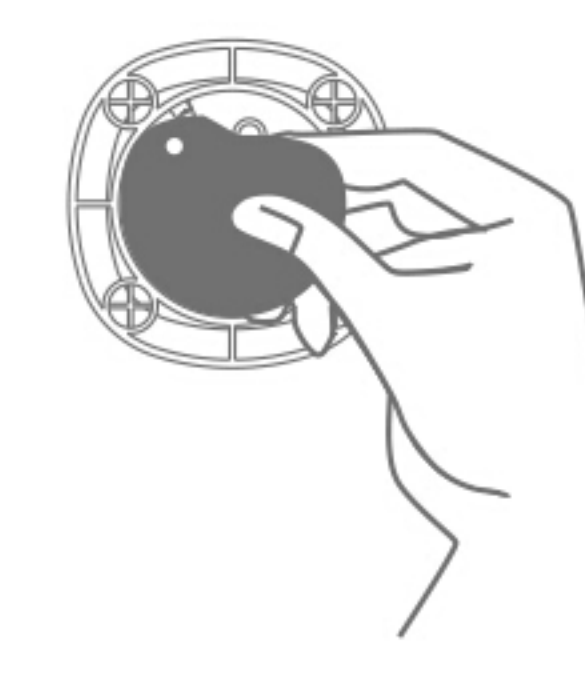
- Rotate the alarm anticlockwise to separate from bracket, then remove battery insulating strip to electrify the alarm.



6

### Installation Step 2

- Installation one: remove the double-sided adhesive and stick alarm into ceiling.
- Installation two: fixed the bracket into ceiling using screws.



Installation one



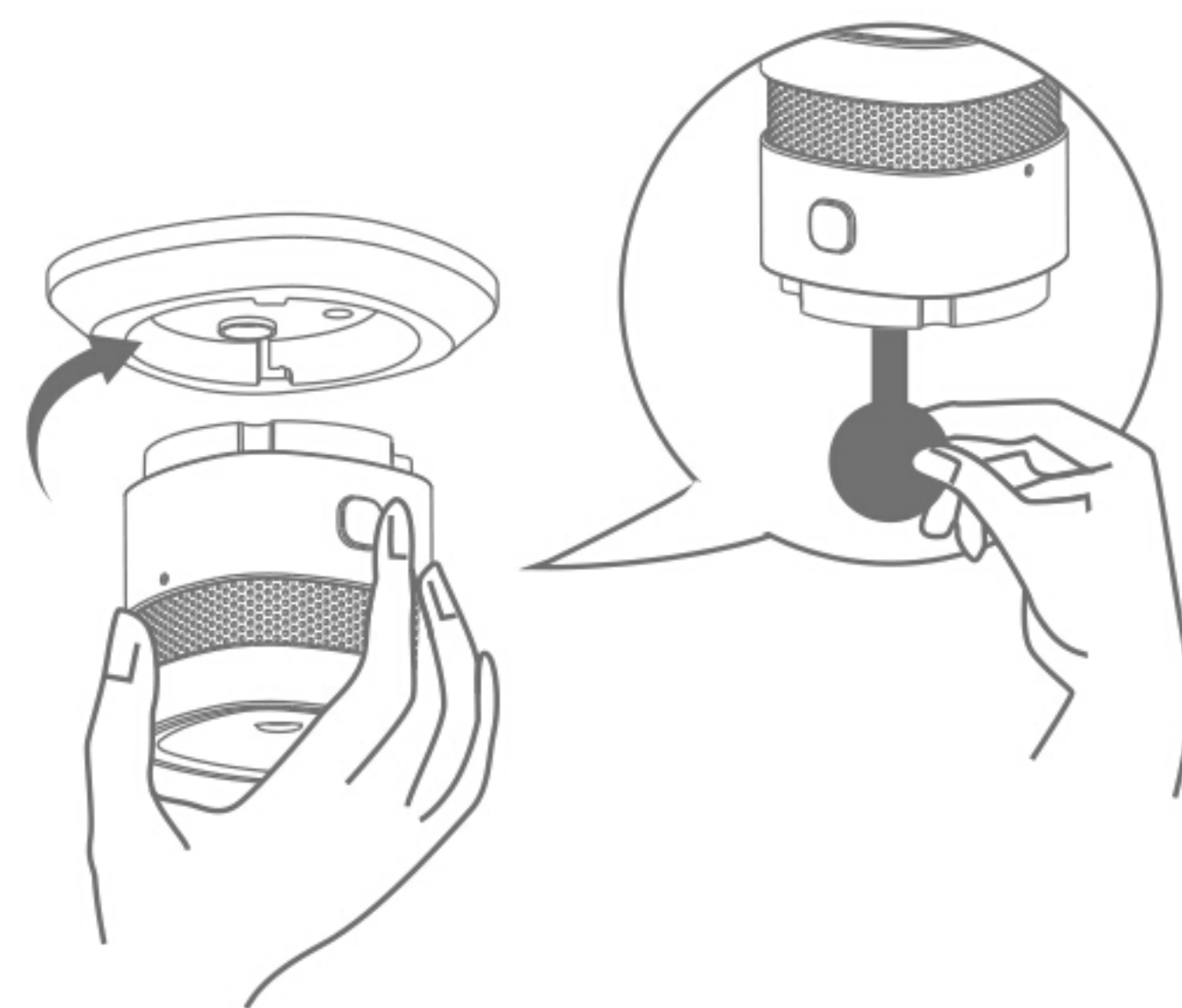
Installation two



Installation with double-sided adhesive should pay attention to as follows:  
1. Make sure the installation surface is smooth, flat, stable, dry and clean.  
2. After installation, regularly check whether the product is attached firmly to the installation surface.

7

- Remove the battery insulating strip to make detector on power, and clockwise rotating alarm into bracket.



8

## 06/Status and Troubleshooting

—Form 1—

Status	Light	Alarm Sound
Normal	Red LED flashes every 53 seconds.	No
Testing	Red LED flashse quickly	Rapid beeps
Alarm	Red LED flashse quickly	Rapid beeps
Hush mode	Red LED Flashes one time every 10 seconds.	No
Low Power	Red LED flashes one time every 53 seconds.	one beeps every 53 seconds
Fault	Red LED flashes two times every 53 seconds.	two beeps every 53 seconds

If the smoke alarm can not work normally, please follow the below procedures to troubleshoot.

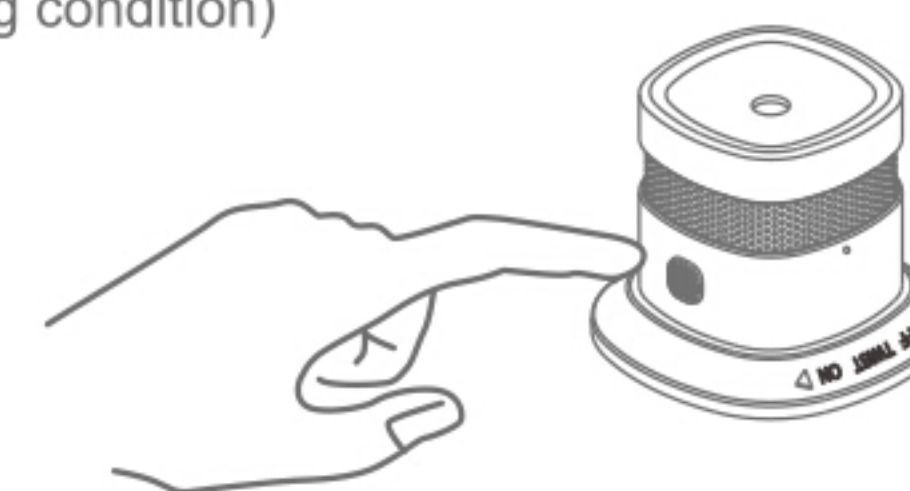
- Smoke alarm does not sound, please check whether the alarm is properly attached to the mounting bracket.
- Battery runs out, (Refer to Form1) Please replace battery immediately.
- Faults caused by dirt, dust and oil etc. (Refer to Form1) Please clean the smoke detector correctly.

9

## 07/Mute and Test

### Hush Function

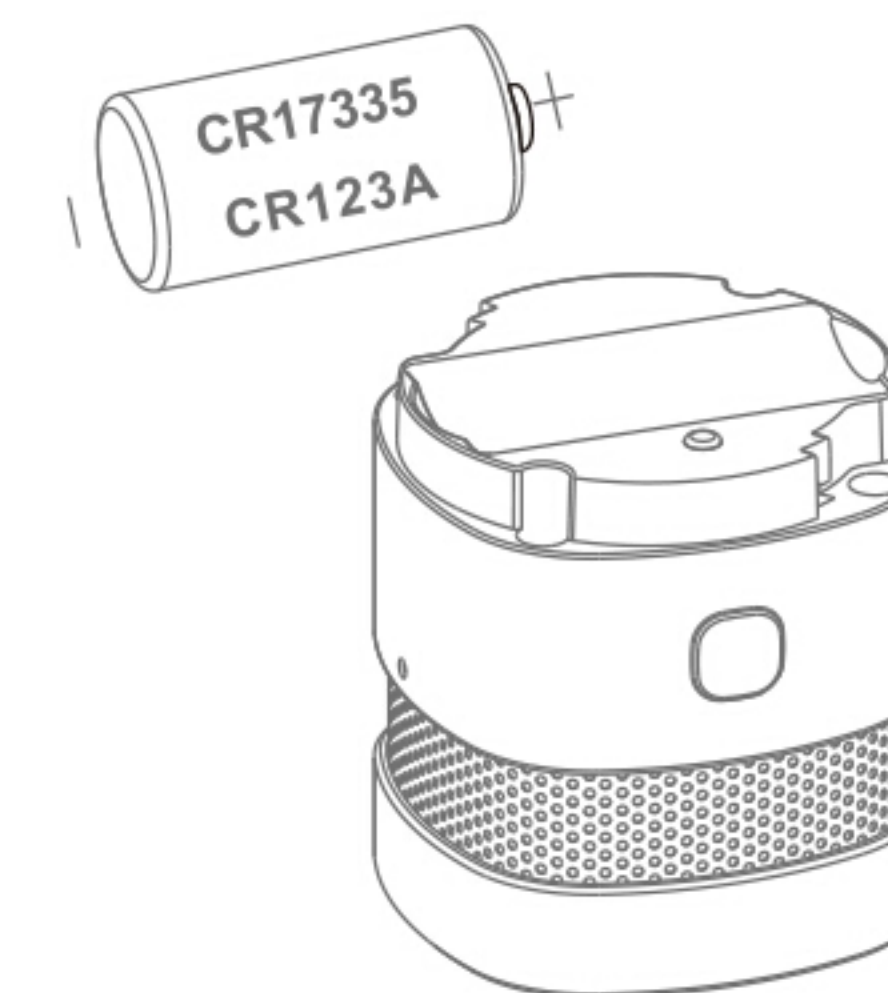
Please make sure there is no real fire danger when using hush function. If non-emergency smoke (e.g. Steam) causes nuisance alarms, please do not stop alarm by block smoke detector or in other forms. You could press the hush/test button to stop alarm temporarily. (Ten minutes later, the smoke detector will be back to normal working condition)



Press and release the test button to test the alarm. The alarm will sound loud short beeps. It means the smoke detector can work normally. The alarm may stop sounding once releasing the test button. It is suggested to test the smoke alarm at least one time every month. Do not use an open flame to test this smoke alarm.

10

## 08/Battery Replacement



Please replace battery correctly according to the positive and negative electrode. Dispose of used battery in right way. Pay attention to environmental protection.

11

## 09/Notice

- The malfunction auto check function of this smoke alarm only provides infrared photoelectric sensor malfunction check and low battery power check. The sensor sensitivity should be tested periodically as required.
- To ensure the sensitivity to smoke, clean the smoke alarm surface with soft brush or cleaner every 6 months. Do not use solvent, liquid or detergent to clean the smoke alarm.
- For malfunction problems, please contact with vendor on time. Do not dismantle and try to repair alarms privately.
- If smoke alarms are not used for a long time, dismount them, remove batteries, put them in packing box and store in cool place.
- Photoelectric smoke alarms could reduce disaster happening. But they can not guarantee a hundred percent safety. For your safety concern, please use this smoke alarm correctly and know the fire safety tips. In daily life, pay attention to build up safety consciousness and take preventive measures.

12

- Combustible liquids such as gasoline should be stored in safe places.
- Please do not smoke in bed and put out cigarette end after smoke.
- If Plugs, Switches, sockets or electric wires etc. are broken, frayed or cracked. Please replace them immediately.
- If use electric home appliances such as heater and warmer, do not overload the circuit. Regularly inspect the equipments to nip danger in the bud.
- Keep portable heaters and open fire such as candles away from flammable materials.
- Keep matches and lighters away from children.
- Make sure there is at least one working fire extinguisher on every floor and an additional one in the kitchen. Make sure fire escape ladders or other reliable means of escape are available in case stairs are blocked.

13

- Make sure all family members know how to do when fire alarm occur.
- Install smoke alarms correctly according to manual. Keep alarm clean and do not let dust accumulate on it. Test smoke alarms at least one time every month to make sure they are working properly. If not please replace them immediately.

14

## 10/Statement

- The information in the user manual is for reference only and does not constitute any form of commitment.
- Without the written permission of the manufacturer, any individual or organization shall not extract or copy part or all of the contents of this user manual, and shall not spread it in any form.
- As the technology is constantly updated, the manufacturer reserves the right to modify the user manual without prior notice. If the user manual and the actual operations is inconsistent, the final interpretation is reserved to the manufacturer herein.

15