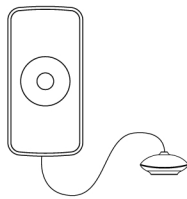


## Smart Water Leakage Sensor User Manual

M415-15EVer1.0



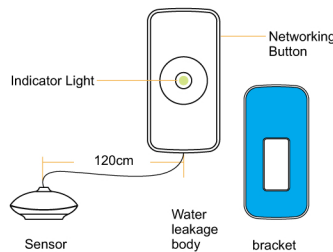
\*Please read the user manual carefully before operation.  
The guide picture is for reference only. please in kind prevail.

1

Smart water leakage sensor, adopts ZigBee wireless module. Super low power consumption circuit design, makes long battery lifespan. Separate design of body and sensor, efficiently prevent the influence resulted from high humidity. High precision and sensitivity, applicable for basement, machine room, hotel, water tower, pool, swimming pool, solar, kitchen, bathroom and other places may have water leakage or water overflow.

Product Instruction

Appearance



2

1. Working Voltage: DC3V (2×AAA battery)
2. Static Current: ≤5uA
3. Alarm Current: ≤35mA
4. Networking: ZigBee Ad-Hoc Networking
5. Wireless Networking Distance: ≥70m ( in the open area )
6. Working Environment: -10°C ~ +65°C
7. Working Humidity: Maxium 95%RH ( No condensation )
8. Body Dimension: 76×36.6×16.5 mm
9. Sensor Dimension: 28.3×26.5×12.2 mm

3

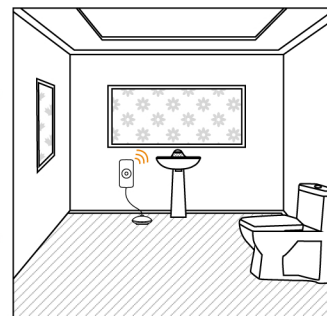
Technical Parameters

Tips

1. Install water leakage sensor at easy leakage area.
2. Don't install water leakage sensor at position of rainwater, lampblack, water vapor etc.
3. Don't install water leakage sensor at water immersed position.

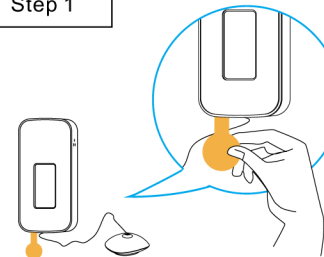
4

Installation Diagram



5

Step 1



- Remove battery insulation film to power on.

6

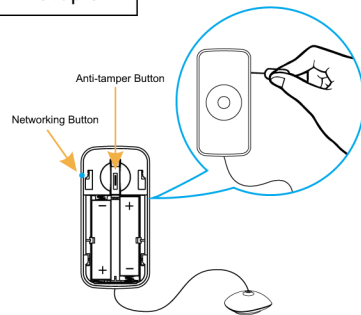
Step 2



- Click the "add" icon in the gateway interface to enter into networking mode.

7

Step 3



8

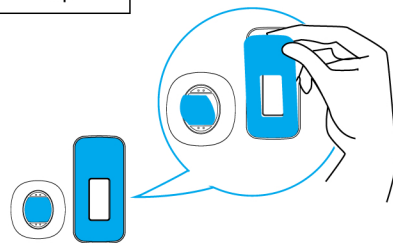
- Connecting network: According to APP prompt, press networking hole with a needle, then green light flashes quickly, green light keeps on for 2-3 seconds, networking succeed.
- Disconnecting network: Press the networking hole with a needle for 8 seconds to disconnect the network, then green light keeps on for 2-3 seconds, which indicates network is disconnected successfully.

LED Indicator instruction of devices

Light	Status
Green Light	1. Flash quickly during connecting network. 2. Keep on for 2-3 seconds when networking succeed. 3. Flash quickly for 1 minute after networking fail.
Red light	1. Flash once when power on. 2. Keep on 2-3 seconds after long press networking hole for 8 seconds to disconnect network.
	1. When the alarm light 0.5 to 1 seconds or so.

9

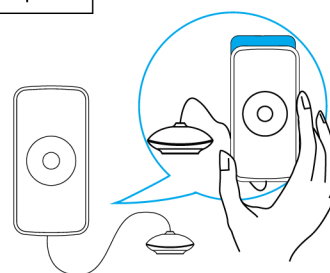
Step 4



- Tear off the double-side tap, and paste the device in the required area.

10

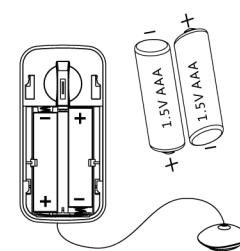
Step 5



- Insert water leakage body to bracket.

11

Changing Battery



- Insert the battery into the battery compartment and close the battery cover. (Please note Battery positive and negative).

12

Statement

\*Instruction is for reference only, please prevail in kind.  
\*Because of the updating of the technology, the final interpretation right owned by factory, if there are any inconformities when using this products under this instruction.

13