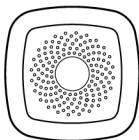


Smart Temperature & Humidity detector User Manual

M414-3Ever1.0



*Please read the user manual carefully before operation.

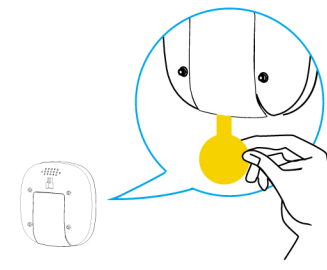
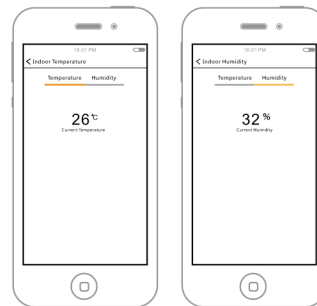
Product Introduction

This product is a smart temperature and humidity detector, adopts extra low power consumption ZIGBEE wireless network technology, using MCU to the signal of temperature and humidity intelligent processing, with functions of dust-proof, insect-proof, etc. Ensuring the stability of the product from the design. With high precision temperature and humidity sensor built-in, it can perceive and report real-time temperature and humidity to APP. The product is suitable for environmental monitoring in residential, factory building, computer room, shopping mall, hotel, office building, teaching building, bank, library, as well as the warehouse and many other places.

1. Operating voltage: DC3V
(1 CR2450 button battery)
2. Standby current: $\leq 10\mu\text{A}$
3. Networking way: ZigBee ad hoc network
4. Wireless networking distance: $\leq 100\text{m}$
(open area)
5. operating temperature: $-15^{\circ}\text{C} \sim +60^{\circ}\text{C}$;
6. ambient humidity: Maximum 95%RH
7. outline dimension: $60^{\circ}60^{\circ}20.8\text{mm}$

Specification

Function effect diagram



- Remove battery insulation film to power on.

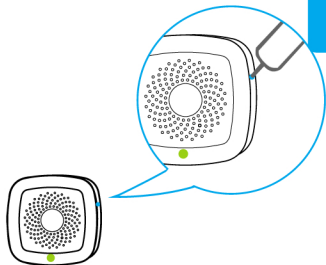
1

2

- Click on the add device key in the APP interface to enter the networking mode.



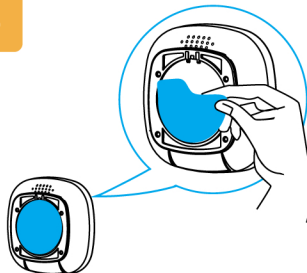
- According to the APP tip, long press the device networking key 2 seconds later, the green light flash, APP interface appears tips, networking success. (The blue dots shown in the graph is the position of the device network key, green dot is the network status lamp.)



3

4

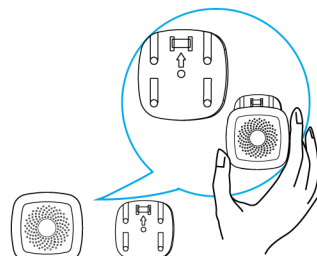
- Tear off the gummed film, stick the equipment in the required area.



Detector

Mounting base

- Note that the mounting base shall be up as the direction of arrow shown in the graph. Finally, hang the detector into the mounting base.



5