

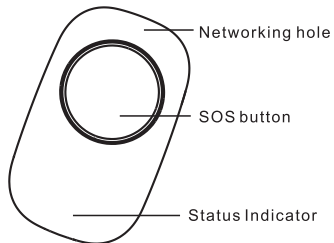
Smart Emergency Button User Manual

M414-10Ever1.0



*Please read the user manual carefully before operation.
The guide picture is for reference only, please in kind prevail.

Product Detail

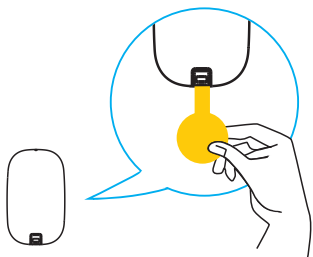


This is a smart emergency button, which can send alarm signal when emergency happens. It has small fashionable design. Adopts super low power consumption zigbee wireless networking, which can make the a longer battery life span. This product is suitable for household, office, department stores, hospital, bank, guard posts and many other places where need safeguard.

Product Introductio

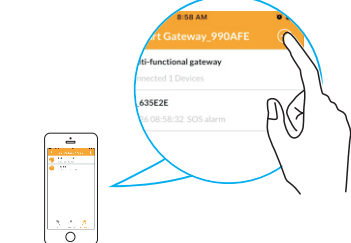
Specification

1. Working Voltage: DC3V (1* CR2032 button battery)
2. Standby Current : $\leq 3\mu A$
3. Alarm Current : $\leq 30mA$
4. Networking Mode: ZigBee Ad-Hoc Networking
5. Wireless Networking Distance: $\leq 100m$ (open area)
6. Working Environment : $-10^{\circ}C \sim +50^{\circ}C$
7. Ambient Humidity : $\leq 95\%RH$
8. Dimension : $57.5*34.5*13mm$



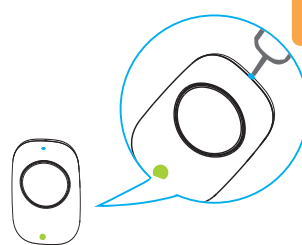
- Remove battery insulation film to power on

1



- Open app and click "Add" button to enter networking mode.

2

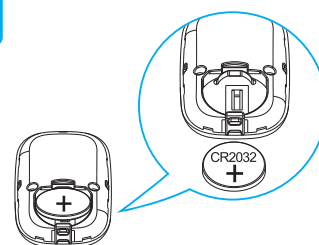


- According to APP prompt, press the button for 2 seconds, green LED flash quickly, APP Interface prompted, networking success. (Press networking hole for 5 seconds if any changes for internet, green LED flash slowly for 3 seconds, exit network successfully

3

Battery Replace

4



- *Please change battery correctly based on the positive and negative terminals of the battery. Pay attention to the environment protection, please deal with the waste battery correctly.